

# SYLWRAP

## Cast Iron Pipe Repair Kit

### Description

The **SylWrap Cast Iron Pipe Repair Kit** is a specialist kit for sealing cracked and cast iron pipework where there is no pressure. It enables permanent repair in under 30 minutes to drain, waste, soil and supply pipes between 32mm and 150mm diameter, matching standard cast iron pipe diameters. It also repairs guttering and rainwater stacks.

Repairs are pressure resistant to 30 bar and temperature resistant to 200°C. The Kit enables effective repairs to be made around difficult elbow joints, tee joints and sections of difficult-to-access pipe in confined spaces. It offers a flexible alternative to heavy, bulky pipe repair clamps.

Fixing leaking cast iron using a SylWrap Kit costs a fraction of carrying out a pipe replacement. Repairs can be made to both domestic and industrial pipework in exterior or interior settings. No operational training is required to use the Kit - simply follow the instructions provided.

### Kit Contents and Directions for Use

The Kit contains two sealing materials - **Superfast Epoxy Putty** and **CrackSeal Sealant** - and **SylWrap HD Pipe Repair Bandage**.

Superfast Epoxy Putty is used to seal small holes and cracks. It is kneaded by hand until it turns a uniform colour and is then pushed into the crack, where it will harden in around 5 minutes to fill the damage with a watertight material.

CrackSeal Sealant is for longer cracks and splits in cast iron pipes. Using a standard sealant gun (not supplied as part of the Kit), CrackSeal is extruded directly into the crack until it is fully filled. CrackSeal sets almost instantly, even on wet surfaces.

Once the crack has been sealed using one of the above methods, the repair is completed by overwrapping with a SylWrap HD Bandage.

Wetting the bandage activates the resin within the wrap. SylWrap is wrapped and smoothed over the initial sealant. It will set in around 5 minutes to form an impact resistant, protective layer for a permanent, reinforced repair.

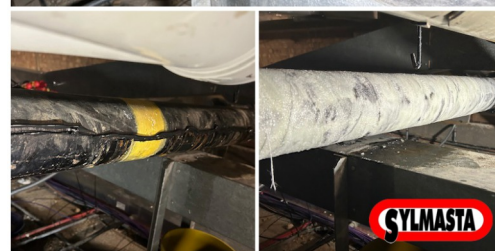
Superfast Epoxy Putty and SylWrap HD have WRAS Approval, meaning they are certified as safe to use for repairs to pipes carrying drink water.

### Advantages

- Seals leaks and cracks in cast iron pipework in under 30 minutes
- Effective on elbows, tees, saddles and other complex shapes
- Repairs can be made at a fraction of the cost compared with replacement
- Easy to use with no operational training required - just follow the instructions provided
- Superfast Epoxy Putty and SylWrap HD make WRAS approved repairs

### Applications

- Cast iron waste, drain and soil pipe repairs
- Sealing leaking rainwater stacks
- Cast iron gutter repair
- Repairing pipework in hospitals, office blocks, car parks and other public buildings where cast iron is prevalent



Whilst all reasonable care is taken in compiling technical data on the Company's products, all recommendations or suggestions regarding the use of such products are made without guarantee, since the conditions of use are beyond the control of the Company. It is the customer's responsibility to satisfy themselves that each product is fit for the purpose for which they intend to use it, that the actual conditions of use are suitable and that in the light of our continual research and development programme the information relating to each product has not been superseded.

## Technical Data

<b>SylWrap Working time</b> .....	2-5 minutes depending upon temperature
<b>Cured material life</b> .....	10-20 years depending upon repair quality, repair thickness, condition of pipe, environmental conditions, pipe temperature, etc. Consult Sylmasta for further information and design life for specific applications
<b>Functional cure</b> .....	30-45 minutes
<b>Full cure (maximum properties)</b> .....	24 hours
<b>Coefficient of thermal expansion</b> .....	$7.1 \times 10^{-5} / ^\circ\text{C}$ (SylWrap composite wrap)
<b>Service conditions</b>	
<b>Max service temperature</b> .....	200°C / 390°F
<b>Max pressure resistance</b> .....	30 bar / 435 psi using Superfast Epoxy Putty and SylWrap HD, depending on nature of leak.

## SylWrap Cast Iron Pipe Repair Kit Sizes

There are 5 different sizes of SylWrap Cast Iron Pipe Repair Kits covering diameters 32mm to 150mm, matching standard cast iron pipe sizes.

SYL-CAST-32-150 is an all-purpose Kit containing enough CrackSeal and different sized SylWrap HD Bandages to cover every diameter and make multiple repairs. It comes in a robust red case which is easy to store on-site or carry on a van, speeding up response time by ensuring the user has everything to hand for when cracks in cast iron pipework are identified.

Product Code:	Pipe Diameter Range:	SylWrap Bandage Sizes:	CrackSeal Cartridges:
SYL-CAST-32-50	32 - 50mm	1 x SYL312HD (75mm x 3.6m)	1 x 310ml Cartridge
SYL-CAST-32-150	32 - 150mm	1 x SYL312HD (75mm x 2.7m) 1 x SYL416HD (100mm x 5.0m) 1 x SYL616HD (150mm x 5.0m) 1 x SYL633HD (150mm x 10.0m)	2 x 310ml Cartridge
SYL-CAST-68-75	68 - 75mm	1 x SYL416HD (100mm x 5.0m)	1 x 310ml Cartridge
SYL-CAST-100	100mm	1 x SYL616HD (100mm x 5.0m)	1 x 310ml Cartridge
SYL-CAST-150	150mm	1 x SYL633HD (150mm x 10.0m)	1 x 310ml Cartridge

## Storage

SylWrap Cast Iron Pipe Repair Kits should be stored in their packaging in cool, dry conditions. SylWrap HD should be kept unopened in its original foil pouch. Piercing or damaging the pouch will cause SylWrap HD to cure prematurely. Under such conditions, SylWrap Cast Iron Repair Kit has a shelf life of at least 24 months from date of manufacture.

## Health & Safety Use

Plastic gloves should be worn when handling Superfast Epoxy Putty, CrackSeal Sealant and SylWrap HD. For further health and safety information, please refer to the relevant product specific Safety Data Sheets.

## Presentation

SylWrap Cast Iron Pipe Repair Kit comes with white SylWrap HD Bandages as standard. Black SylWrap HD can be supplied upon request to make repairs appear more uniform with black pipework.

Whilst all reasonable care is taken in compiling technical data on the Company's products, all recommendations or suggestions regarding the use of such products are made without guarantee, since the conditions of use are beyond the control of the Company. It is the customer's responsibility to satisfy themselves that each product is fit for the purpose for which they intend to use it, that the actual conditions of use are suitable and that in the light of our continual research and development programme the information relating to each product has not been superseded.