

SYLWRAP Case Study

Bilge Pipe Leak Repair On Board Superyacht

A leaking bilge pipe on board a superyacht is sealed after corrosion at a welded joint created a hole in an area of the line where it was impossible to fit a clamp



Defect

Corrosion had attacked a weak spot at a welded joint in the steel pipe, creating a hole close to a 90-degree elbow and the hull of the superyacht.

The leak was also surrounded by other pipes and equipment, making repair using a clamp impossible.

With water jetting out the pipe whenever the bilge pump went into operation, the hole needed to be urgently sealed to prevent flooding and damage.

Solution

A **SylWrap Pipe Repair Contractor Case** was sent to the superyacht, from which **Wrap & Seal Pipe Burst Tape** was used to seal the leak.

The tape was stretched by three times its length. It self-amalgamated as it was wrapped to form a solid rubber band containing the 2 bar pressure of the line.

SylWrap HD Pipe Repair Bandage then reinforced the repair. It was applied over the tape, curing to form a rock-hard protective sleeve around the pipe.



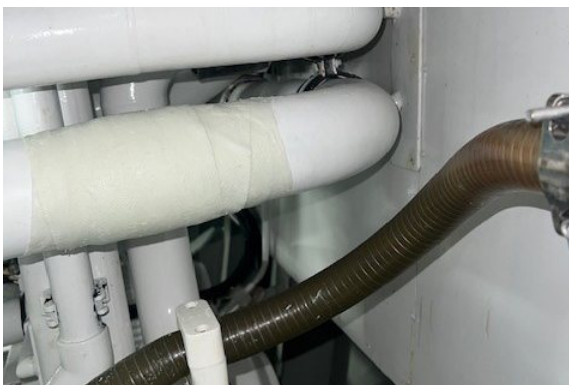
Corrosion had made a hole in a welded joint near an elbow bend. The leak was also surrounded by other pipes and equipment, leaving no room to fit a clamp

Result

Completing the application took under 30 minutes. Although SylWrap repairs are permanent, the superyacht still intended to fabricate and install a replacement bilge line when time in dry dock allowed.

Having discovered how quick and straightforward a SylWrap repair is, the superyacht now permanently carries a Contractor Case on board.

It is easily stored in a cupboard and means the superyacht can make up to six emergency live leak pipe repairs, even when sailing the high seas.



Wrap & Seal sealed the leak with pressure resistance to 2 bar, followed by overwrapping with SylWrap HD for reinforcement and protection