

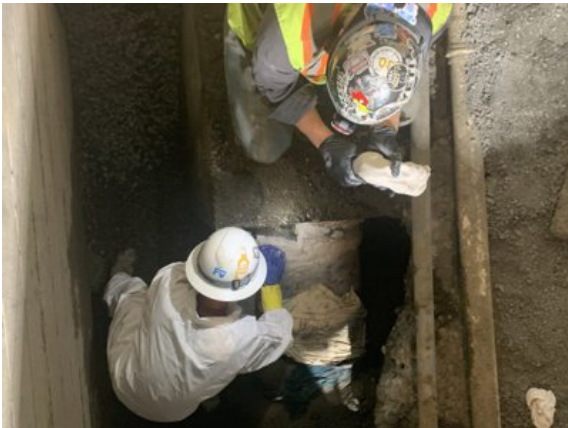
SYLWRAP Case Study

600mm Concrete Water Main Pipe Break Repair

A city authority in Canada reduce a significant 2 bar leak down to a slow drip by repairing a break in an underground 600mm concrete water main pipe



The break was somewhere beneath the joint in the pipe at the point it passed into the concrete wall



Two maintenance workers mixed AB Original Sticks by hand inside the hole, packing the putty around the leaking joint in the pipe



Once water loss had been reduced to an acceptable level by encompassing the leak area, the repair was reinforced with SylWrap HD Bandage

Defect

The 600mm pipe ran beneath a road. A break was discovered and with a series of damaging main bursts making news across Canada, the authority carried out immediate excavation to assess and repair the leak.

A steady, hard spray of water was found jetting out through a joint at the point where the pipe passed into a solid concrete wall.

Identifying the exact leak location under the joint was impossible, the pipe could not be fully shutdown and the adjacent wall made wrapping difficult.

Solution

Pressure was reduced as much as possible from 2 bar and just under 8kg of **Sylmasta AB Original Epoxy Putty** used to seal around the entire joint.

The putty was supplied in 200g sticks, mixed by hand and then packed around the joint. AB Original has high wet surface adhesion, enabling it to bond to the pipe even with water pouring out during the repair.

Once water loss had been reduced to a slow drip, the putty was overwrapped with 2 x SYL866HD **SylWrap Pipe Repair Bandage**. SylWrap formed a rock-hard outer shell, increasing the effectiveness of the repair.

Result

The importance of the pipe meant pressure could only be reduced between 12am and 5am. The repair was completed in three hours, easily within the window.

It took just five days from initial contact between the city and Sylmasta for a repair method to be devised, the goods shipped from the UK and the leak reduced to an acceptable level until the pipe can be replaced.