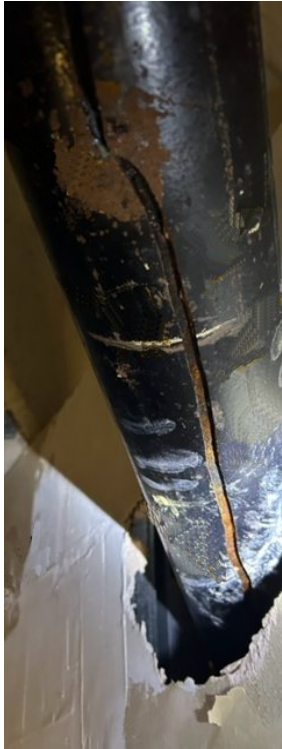


SYLWRAP Case Study

Hospital Repair Cracked Cast Iron Downpipe

A 1.05-metre long crack in an internal cast iron downpipe leaking rainwater into a hospital ward is sealed in 30 minutes with no disruption to patients and staff



Water escaping through the 1.05-metre long crack in the downpipe had saturated surrounding plasterboard and was now leaking into a nearby hospital ward



The crack was sealed by extruding CrackSeal directly into it. The entire length of pipe was then reinforced with SylWrap HD for a permanent repair



Defect

The hospital had an ageing 150mm diameter cast iron pipe system taking rainwater away through the building. A leak into a ward alerted staff to a problem in a wall cavity containing a section of downpipe.

A drainage engineer accessed the cavity and pipe, discovering a 1.05-metre crack. Budget restraints and the possibility of new facilities being built meant replacing the damaged pipework was not viable.

Instead, a cost-effective repair method was needed to seal the crack before it next rained and a more significant leak caused greater damage.

Solution

The engineer carried a **SylWrap Drain & Waste Pipe Repair Kit** on their van, meaning they already had all the products needed to repair the leak.

CrackSeal Sealant was extruded directly into the crack until it was totally filled. It hardened almost instantly to seal the crack, after which it was left for 10 minutes to form a skin.

Two **SylWrap HD Pipe Repair Bandages** were then wrapped along the length of the crack. SylWrap set rock-hard within minutes, forming an impact resistant sleeve protecting both the CrackSeal repair and pipe.

Result

Having a Drain & Waste Pipe Repair Kit to hand meant the engineer was able to seal the crack within 30 minutes of accessing the downpipe with no disruption caused.

The speed and convenience of the repair has led the hospital to use the Kit for numerous other drain, waste and soil pipe sealing applications.