

# Liquid Metal Epoxy Repair Coating

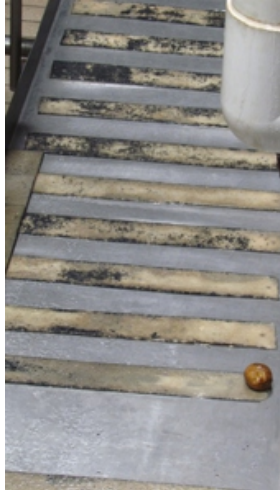
# Case Study

## PepsiCo Plant Anti Slip Flooring Installation

PepsiCo use Liquid Metal as a cost effective means of laying new and replacement anti slip flooring in 12 different areas of their plant in Chile



Existing anti slip surfaces had become worn and ineffective. These needed to be replaced, as well as new surfaces installed in other areas



### Defect

New anti slip surfaces were needed for 12 different areas across the PepsiCo Chile production plant. These included on tiled floors, concrete corridors, a metal ramp and an open lift.

To make this large-scale application cost effective and convenient, the maintenance team wanted an epoxy coating capable of bonding silicon carbide grit to each of the surface materials requiring anti slip treatment.

### Solution

**Liquid Metal Epoxy Coating** was chosen for its high bond strength and its long gel time which allows large quantities to be mixed at once without worry of the coating curing off before application is complete.

Masking tape marked out where the anti slip strips were required and the surface left exposed was coated with Liquid Metal.

Whilst the epoxy coating remained tacky, silicon carbide grit was sprinkled over the top. The masking tape was then removed.

Once Liquid Metal cured, it permanently bonded the grit with the floor to create an anti slip surface.

### Result

Anti slip surfaces were successfully installed to the different substrates in all 12 areas of the plant. The entire application was completed within 24 hours of the final area being coated.

PepsiCo were impressed enough with the ease and speed of the application to use Liquid Metal combined with silicon carbide for creating more anti slip surfaces at other plants and even inside their delivery vans.



Liquid Metal was painted onto the surface in strips created using masking tape. Silicon carbide grit was then sprinkled over the top whilst the coating remained tacky



Once Liquid Metal cured, it left the grit permanently bonded to the flooring. This created a robust anti slip surface