

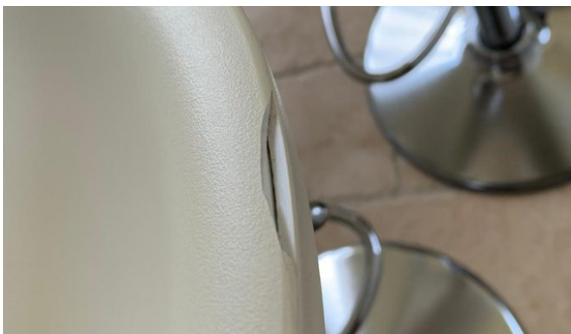
Sylmasta AB Case Study

Designer SMC Bar Stool Chip Filler Repair

Sylmasta AB makes a DIY repair of a chip in a designer bar stool made from SMC and worth £500 which a restoration company quoted £222 to fix



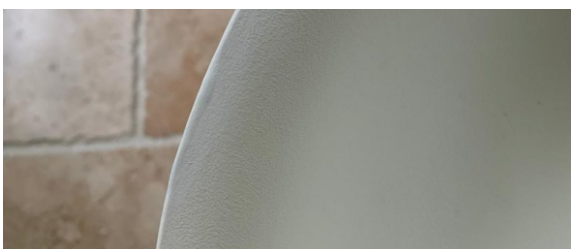
The designer white bar stools were worth £500 each



Chip in the stool prior to undergoing repair



Sylmasta AB bonded to the SMC, filling the chip



Paint colour matched to the stool and added after AB had cured completed a seamless repair

Defect

The beloved white designer bar stool became damaged when children accidentally knocked it over whilst playing, causing a large chip to the edge of the SMC seat.

SMC is a difficult-to-repair moulding compound with an inbuilt mould release agent which can be inconsistent.

This meant there was little chance of glues or adhesives forming a suitable bond when attempting to reattach the broken fragments, hence the £222 cost of repair.

Solution

Seeking a more cost-effective DIY solution, the owner contacted Sylmasta who recommended the use of **Sylmasta AB Original Epoxy Putty**.

Unlike glues and adhesives, AB Original would be able to anchor itself into the cavity, filling the chip. Its two-hour work time meant the putty could be moulded, shaped and applied without rushing.

Careful application of AB Original repaired the damage. The owner even managed to recreate the pattern of the seat, using a wire brush to slightly indent the putty before it set.

AB Original can be painted once cured. The owner matched a paint to the exact colour of the seat, ensuring the repair blended in seamlessly.

Result

The repair required one 250g kit of AB Original, costing £12.60 plus carriage - a far cry from the original £222 quoted by the restoration company.

